



## Forest Service News Release

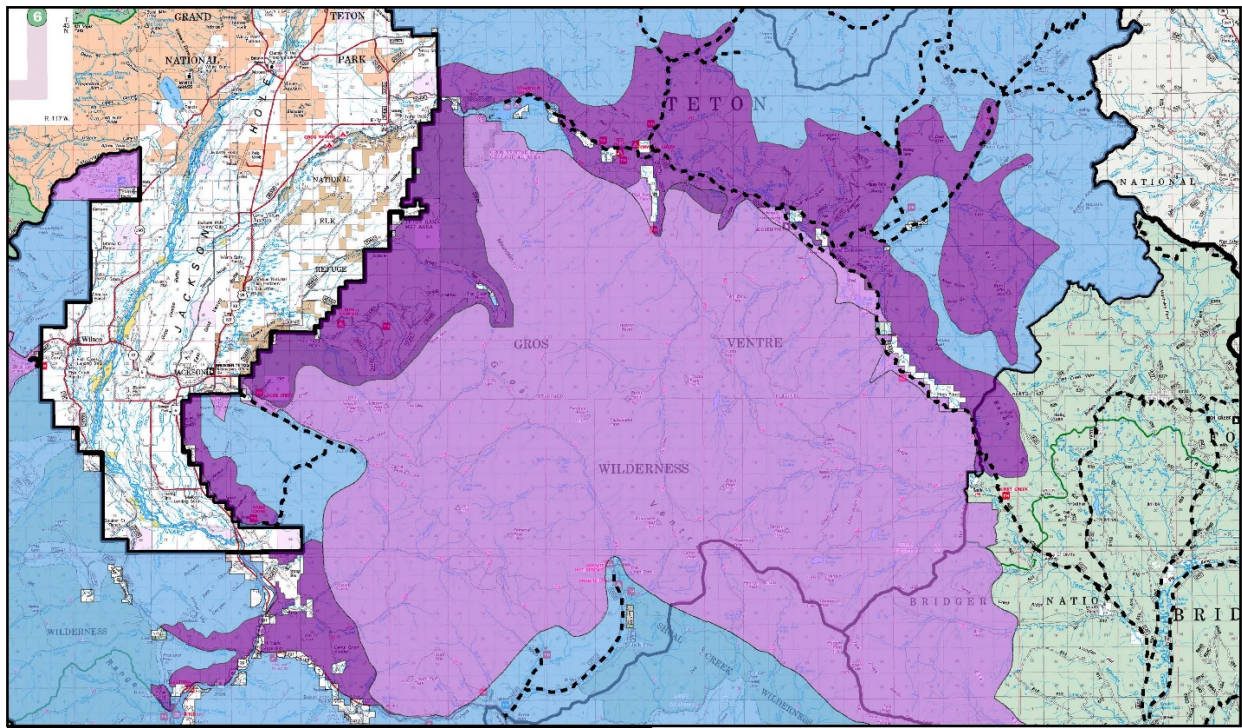
Public Affairs Officer: Mary Cernicek  
(307)739-5564  
[mary.cernicek@usda.gov](mailto:mary.cernicek@usda.gov)  
[www.fs.usda.gov/btnf](http://www.fs.usda.gov/btnf)

### Jackson Ranger District Aligns Winter Range Closure

**Jackson Wyo., April 15, 2021** –The Jackson Ranger District of the Bridger-Teton National Forest has issued a temporary special order that allows access to critical winter range at 6:00 a.m. on May 1, 2021. This aligns the opening time with the National Elk Refuge, and the timing of the Wyoming Game and Fish Commissions statute allowing shed and horn collection. The coordinated timing should minimize confusion and promote a safe environment for public land users.

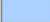



The Bridger-Teton National Forest Special Order 04-03-332 defines winter travel restrictions for the Jackson and Blackrock Ranger Districts. These restrictions are necessary to protect wintering wildlife and their habitat from the disturbance caused by over-snow vehicles and human presence. This order is in place annually from either December 1<sup>st</sup> or 15<sup>th</sup> (depending upon the area) through April 30<sup>th</sup>. The new temporary special order 04-03-509 supports access to these areas lifting winter travel restrictions at 6:00 a.m. on May 1, 2021. This area is shown in dark purple on the map below.

When visitors enter closed winter range, they can cause animals using the area to become stressed or flee to new locations. This retreat requires animals, especially ungulates like deer, elk, and moose, to use energy stores they need to survive. This leads to a weakened condition, which can have a direct effect on the animal's ability to defend itself, making it more susceptible to predation and disease. Additionally, these stressors can lead to future reproduction problems which can adversely affect the overall population size.



**Jackson Ranger District**

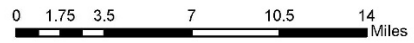
**Winter Travel**

-  Open Travel
-  Restricted Area until May 1st 6am
-  Non-Motorized Access Only
-  Winter Trails



**Bridger-Teton National Forest**

Restricted Area  
Order Number: 04-03-509



JLW 4/14/21

###

USDA is an equal opportunity provider, employer and lender.